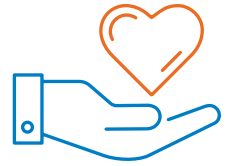


# Providing vital support for chronic kidney health management with REACH Kidney Care



Health care works best when it works together. That's why Excellus BlueCross BlueShield provides a coordinated, caring, personalized, and holistic health insurance experience that connects the dots for you and your employees, improving care and helping to manage costs for everyone. Our approach is simple – people come first. We address all types of member health conditions personally and proactively.

For members who have Stage 4 & 5 chronic kidney disease (CKD), we provide access to our REACH Kidney health management program through our partnership with REACH Kidney Care.

REACH provides one-on-one, individualized support, both in-person and virtually, to help members with advanced CKD, kidney transplant, and End-Stage Renal Disease (ESRD).

Members benefit from a REACH multi-disciplinary care team that partners with them, their primary care physician, and other providers, who remain at the center of their care.



## CKD Health Management

Personalized health management for people with the highest clinical needs to slow disease progression.



## Dietary Consultations

Member-centered dietary services offered in collaboration with CKD health management services to help support patient's diet and fluid needs.



## Coordinated Care Transitions

Collaboration with members and providers to support a smooth transition to the members choice of care, including transplant, dialysis, or medical management without dialysis.



## Kidney Transplant Health Management

Supportive care services for those who receive a kidney transplant to help them sustain the transplant over time.



## Dialysis Health Management

Individualize health management for people with ESRD.



## REACH Clinical Pharmacy

Evaluation of patients' medications to ensure optimal medication therapy to meet the patients' health needs.

# 82.3%

of patients would definitely recommend REACH to a friend or family member<sup>1</sup>

# \$5,640

savings per engaged member per year (PeMPY)<sup>2</sup>

# 42%

of REACH members receiving in home dialysis saves \$15,000 PeMPY<sup>3</sup>

# \$92,000

PeMPY in savings through preemptive kidney transplants.<sup>4</sup> Only 3% of ESRD patients receive preemptive kidney transplants compared to 12% of REACH members<sup>3</sup>

<sup>1</sup> REACH member experience data

<sup>2</sup> REACH Kidney Care Vendor calculations using projected gross commercial Health Plan data savings

<sup>3</sup> Per National Data

<sup>4</sup> REACH Kidney Care Vendor calculations using Health Plan Commercial data

REACH Kidney Care is a separate company and offers a kidney health management program on behalf of Excellus BlueCross BlueShield.

Copyright © 2024, Excellus BlueCross BlueShield, a nonprofit independent licensee of the Blue Cross Blue Shield Association. All rights reserved.